



KAFFE
FASSETT
for

Free Spirit

Snookered Quilt

Featuring Kaffe Fasset Collective
February 2020

Color reigns supreme in this cascade of diamonds.

Collection:	Kaffe Fasset Collective February 2020
Technique:	Templates, Piecing, Quilting
Skill Level:	Advanced Beginner
Finished Size:	63" x 84" (160.02cm x 213.36cm)

All possible care has been taken to assure the accuracy of this pattern. We are not responsible for printing errors or the manner in which individual work varies. Please read the instructions carefully before starting this project. If kitting it is recommended a sample is made to confirm accuracy.

Project designed by Kaffe Fasset
 Tech edited by Alison M. Schmidt

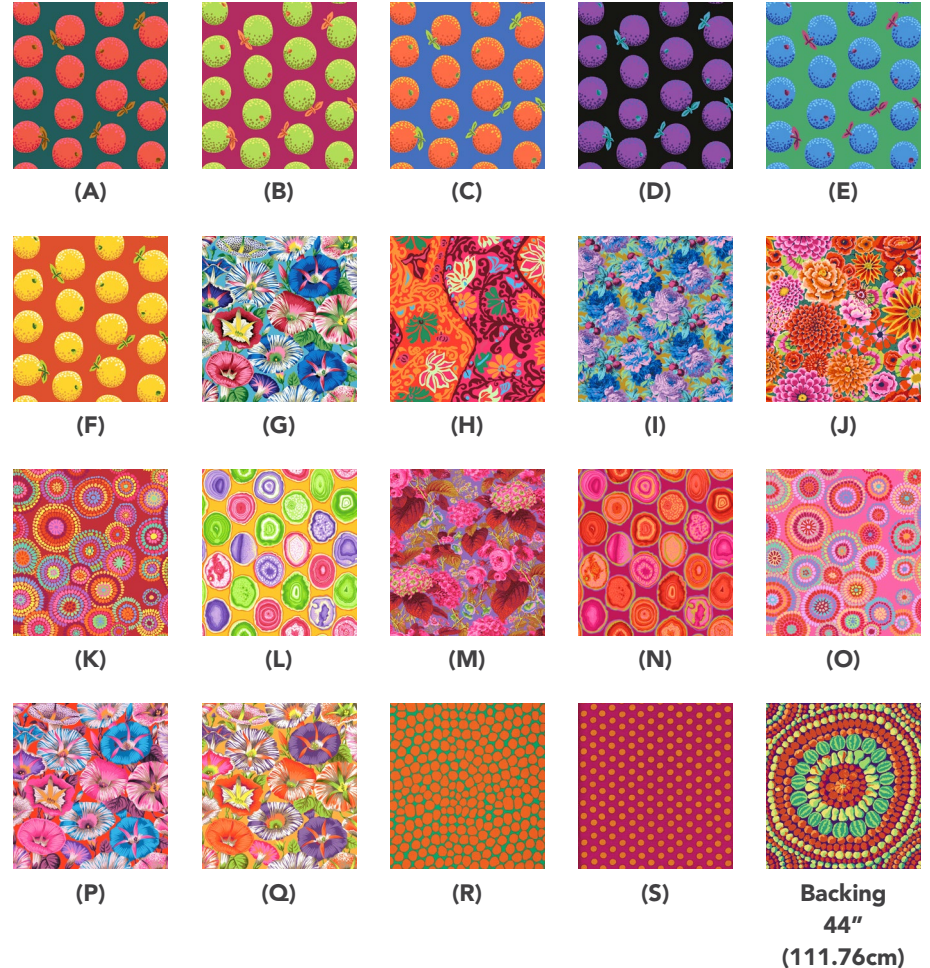
Fabric Requirements

DESIGN	COLOR	ARTICLE CODE	YARDAGE
(A) Oranges	Red	PWGP177.RED	5/8 yard (0.57m)
(B) Oranges	Lime	PWGP177.LIME	5/8 yard (0.57m)
(C) Oranges	Orange	PWGP177.ORANGE	5/8 yard (0.57m)
(D) Oranges	Purple	PWGP177.PURPLE	5/8 yard (0.57m)
(E) Oranges	Blue	PWGP177.BLUE	5/8 yard (0.57m)
(F) Oranges	Yellow	PWGP177.YELLOW	1/2 yard (0.46m)
(G) Varigated Morning Glory	Aqua	PWPJ098.AQUA	1/2 yard (0.46m)
(H) Bali Brocade	Red	PWBM069.RED	1/2 yard (0.46m)
(I) Luscious	Ochre	PWPJ011.OCHRE	1/2 yard (0.46m)
(J) Enchanted	Red	PWGP172.REDXX	1/2 yard (0.46m)
(K) Mosaic Circles	Red	PWGP176.RED	1/4 yard (0.23m)
(L) Geodes	Gold	PWPJ099.GOLD	1/4 yard (0.23m)
(M) Rose and Hydrangea	Hot	PWPJ097.HOT	1/4 yard (0.23m)
(N) Geodes	Red	PWPJ099.RED	1/4 yard (0.23m)
(O) Mosaic Circles	Pink	PWGP176.PINK	1/4 yard (0.23m)
(P) Varigated Morning Glory	Red	PWPJ098.RED	1/4 yard (0.23m)
(Q) Varigated Morning Glory	Orange	PWPJ098.ORANGE	1/4 yard (0.23m)
(R) Jumble	Tangerine	PWBM053.TANGE	1 1/4 yards (1.14m)
(S) Spot	Magenta	GP70.MAGEN*	5/8 yard (0.57m)

* includes binding

Backing (Purchased Separately)

44" (111.76cm) wide			5 1/4 yards (4.80m)
OR			
108" (274.32cm) wide			
Fruit Mandala	Red	PBGP003.2REDX	2 1/8 yards (1.94m)



Additional Requirements

- The Kaffe Collective Aurifil thread 100% cotton
- 71" x 92" (180.34cm x 233.68cm) batting
- 12" x 18" (30.48cm x 45.72cm) Template plastic OR Super Sidekick ruler by Jaybird Quilts

Cutting

WOF = Width of Fabric

The Diamonds and Triangles can be cut using the templates provided or the Super Sidekick ruler by Jaybird Quilts. Follow the Cutting Guide and the instructions below to cut the Diamonds and Triangles. Handle cut pieces gently so as not to distort the bias edges.

If using the templates provided: Cut out and tape together the pieces of the Diamond template. Trace Diamond and Triangle templates onto template plastic and cut on the outside lines. To sub-cut fabric pieces from strips, place the templates, right side up, on the right side of a single layer strip of fabric. Trace around template and then cut out.

If using Super Sidekick ruler: Following the packaging instructions, cut fabric pieces from a single layer strip of fabric, right side up.

Tip: *If desired for easier alignment when joining diamonds, you can trim the narrow points of all diamonds using the blunt tip of the triangle template or the blunt tip triangle markings on the Super Sidekick ruler.*

Fabrics A and B, cut from each:

(3) 6½" x WOF (16.51cm x WOF); sub-cut (12) Diamonds

Fabric C, cut:

(3) 6½" x WOF (16.51cm x WOF); sub-cut (11) Diamonds

Fabrics D and E, cut from each:

(3) 6½" x WOF (16.51cm x WOF); sub-cut (10) Diamonds

Fabric F, cut:

(2) 6½" x WOF (16.51cm x WOF); sub-cut (8) Diamonds

Fabric G, cut:

(2) 6½" x WOF (16.51cm x WOF); sub-cut (6) Diamonds

Fabrics H through J, cut from each:

(2) 6½" x WOF (16.51cm x WOF); sub-cut (5) Diamonds

Fabrics K through P, cut from each:

(1) 6½" x WOF (16.51cm x WOF); sub-cut (4) Diamonds

Fabric Q, cut:

(1) 6½" x WOF (16.51cm x WOF); sub-cut (3) Diamonds

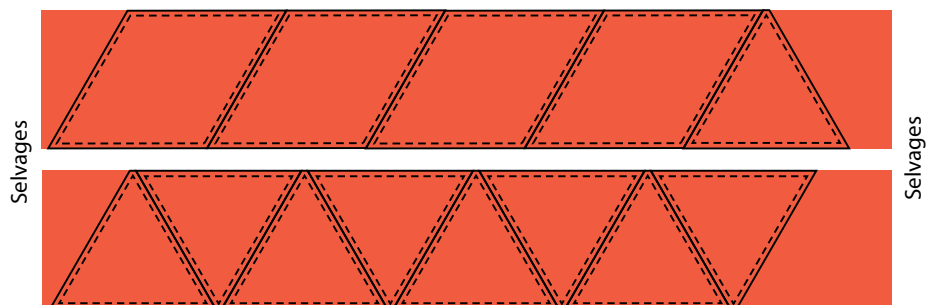
Fabric R, cut:

(6) 6½" x WOF (16.51cm x WOF); sub-cut (12) Diamonds and (20) Triangles

Fabric S, cut:

(8) 2½" x WOF (6.35cm x WOF) for binding

Cutting Diagram



Instructions

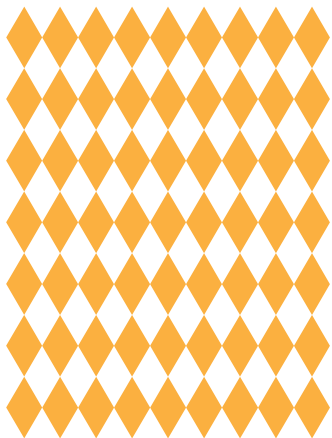
All seam allowances are $\frac{1}{4}$ " (.64cm) and pieces are sewn right sides together.

Quilt Top Assembly

Note: Follow the **Quilt Layout** diagram while assembling the quilt. Press all seams open unless otherwise stated.

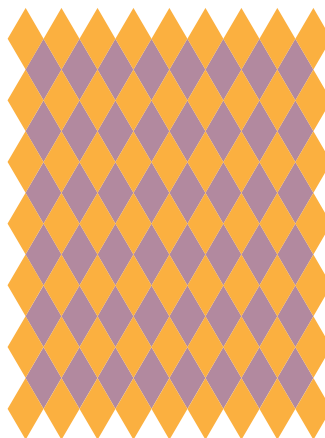
1. Layout the **Fabric A** through F Diamonds, into 7 rows of 9 Diamonds, randomly placing the prints. (**Fig. 1**)

Fig. 1



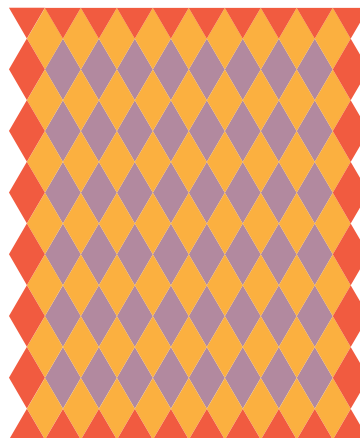
2. Fill the spaces in between the rows created in Step 1 with the **Fabric G** through Q Diamonds. (**Fig. 2**)

Fig. 2



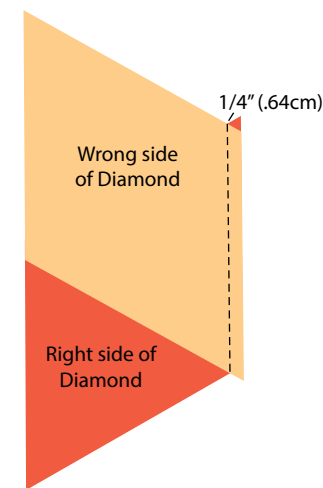
3. Add the **Fabric R** Diamonds to the sides of the laid out quilt top and the Triangles to the top and bottom. (**Fig. 3**)

Fig. 3



4. Sew the Diamonds and Triangles together into diagonal rows. Tip: When sewing the Diamonds and Triangles together, offset the pieces to ensure there is a V-shaped trough at the $\frac{1}{4}$ " (.64cm) seam at the beginning and end of the pieces (**Fig. 4**). Note: if you've pretrimmed the diamonds tips with the blunt triangle point, your work will look different from **Fig. 4** and you will just have to match the blunted ends on the narrow points.

Fig. 4



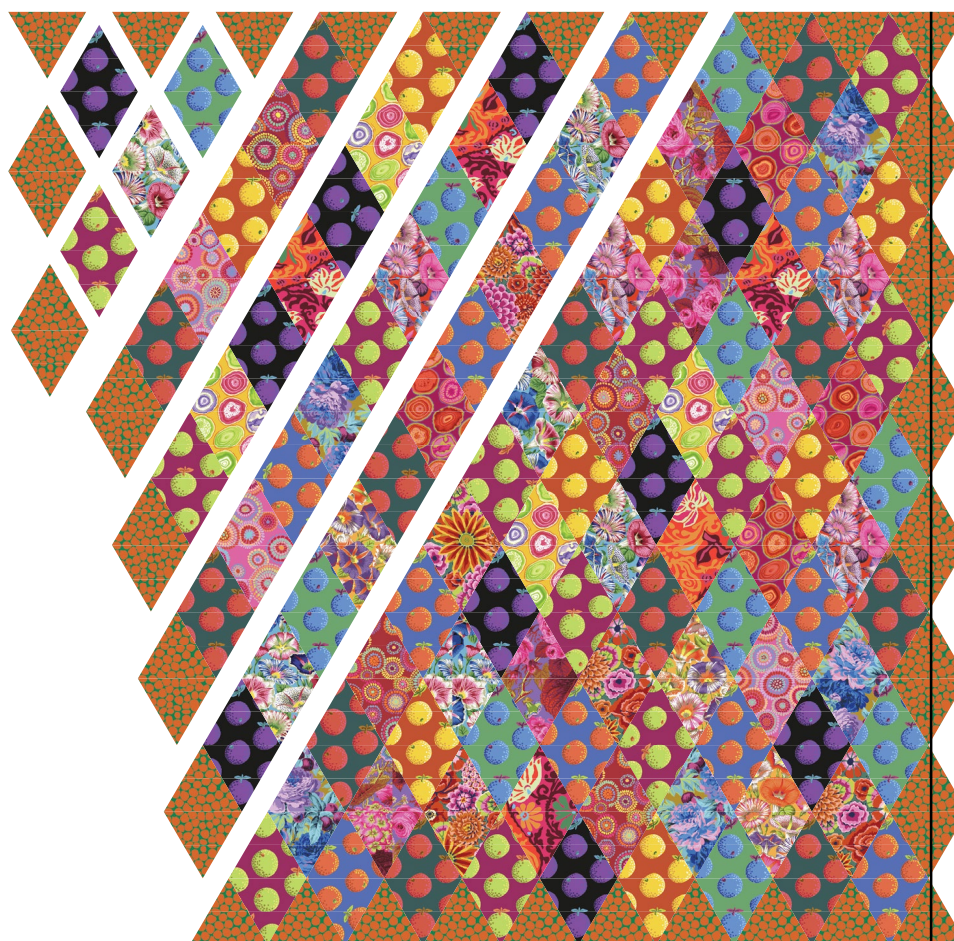
5. Sew the rows together, pinning to match seams within the rows.

- If desired, trim the left and right-hand sides of the Quilt Top $\frac{1}{4}$ " from the **Fabric A** through F Diamonds to straighten the edges. Machine baste $\frac{1}{8}$ " from the cut edge to prevent stretching of the bias edges while quilting. Alternately, trim the side edges after quilting to avoid raw edges on the bias while finishing.

Finishing

- Sew together the $2\frac{1}{2}$ " (6.35cm) **Fabric S** binding strips end to end using diagonal seams. Press seams open. Press the binding strip in half wrong sides together.
- Layer backing (wrong side up), batting, and quilt top (right side up). Baste the layers together and quilt as desired. Trim excess batting and backing even with the top (square side edges if not completed in Step 6).
- Leaving an 8" (20.32cm) tail of binding, sew the binding to the top of the quilt through all layers matching all raw edges. Miter corners. Stop approximately 12" (30.48cm) from where you started. Lay both loose ends of binding flat along quilt edge. Where the loose ends meet, fold them back on themselves and press to form a crease. Using this crease as your stitching line, sew the two open ends of the binding right sides together. Trim seam to $\frac{1}{4}$ " (.64cm) and press open. Finish sewing binding to quilt.
- Turn the binding to the back of quilt and hand-stitch in place.

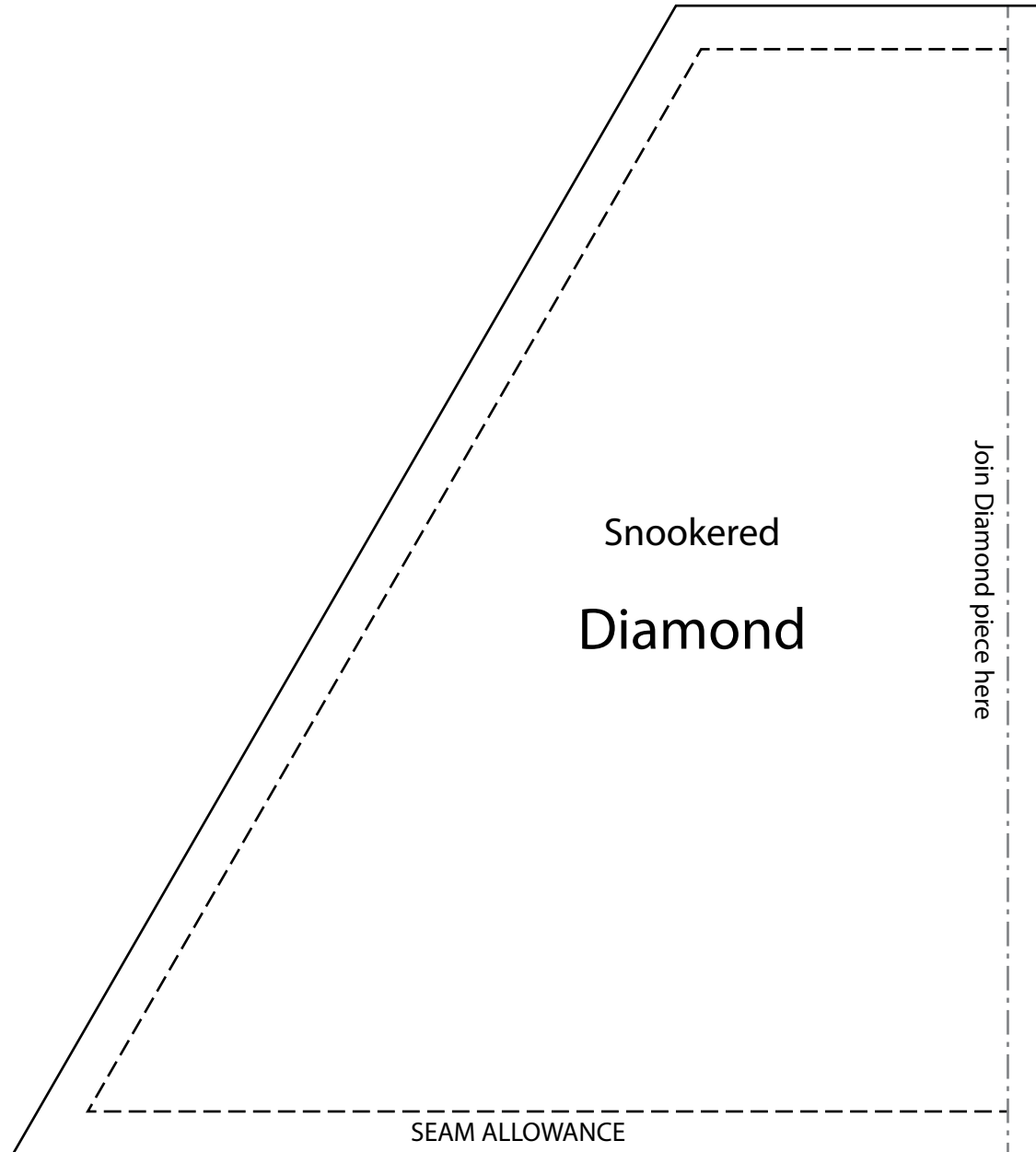
Quilt Layout



Trim $\frac{1}{4}$ " (.64cm) from the outer point of **Fabric A** through F Diamonds.



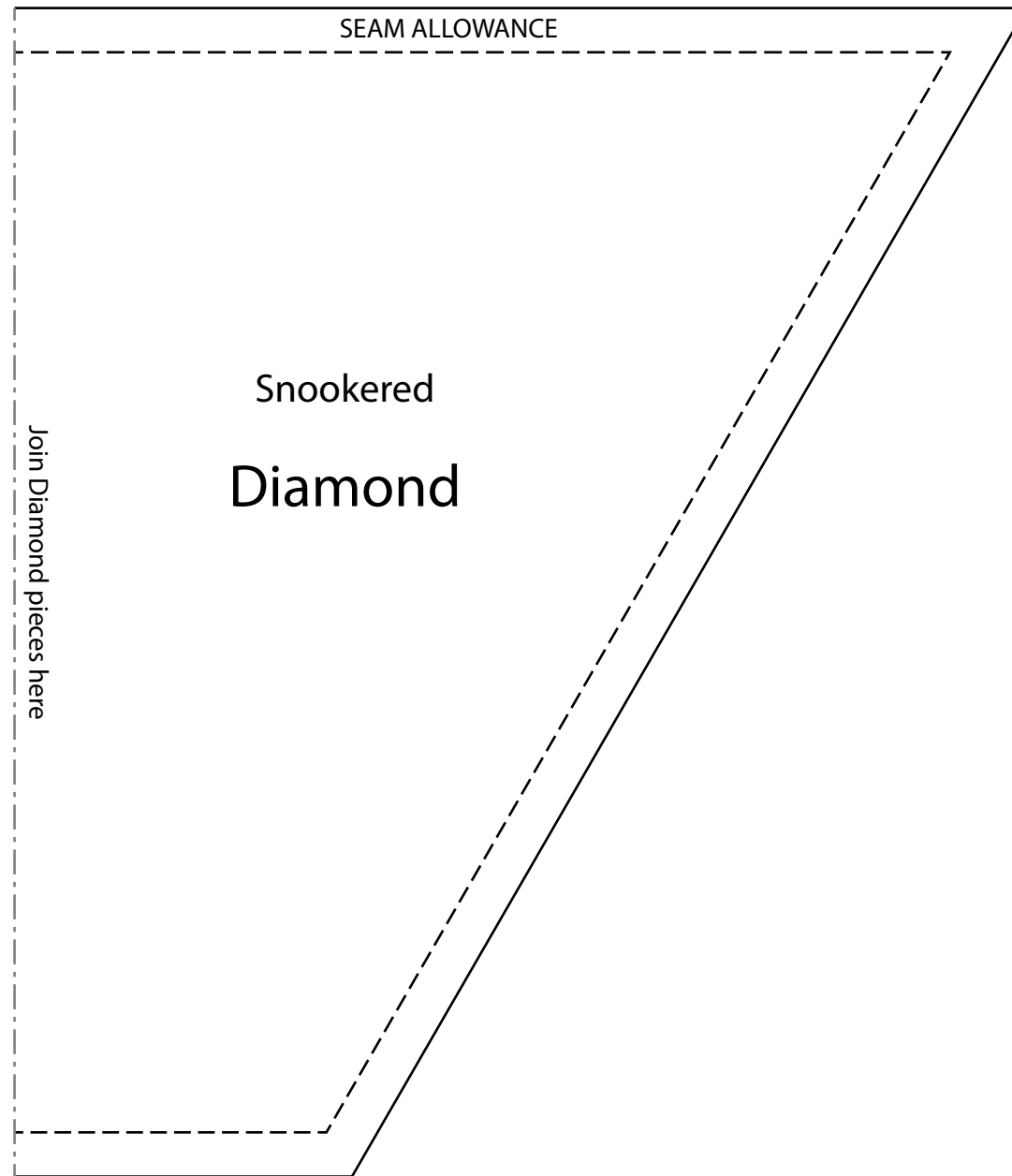
Snookered Quilt



This square should measure 1" x 1" (2.54cm x 2.54cm) when printed.

***** Measure templates before cutting to confirm printing at 100%*****

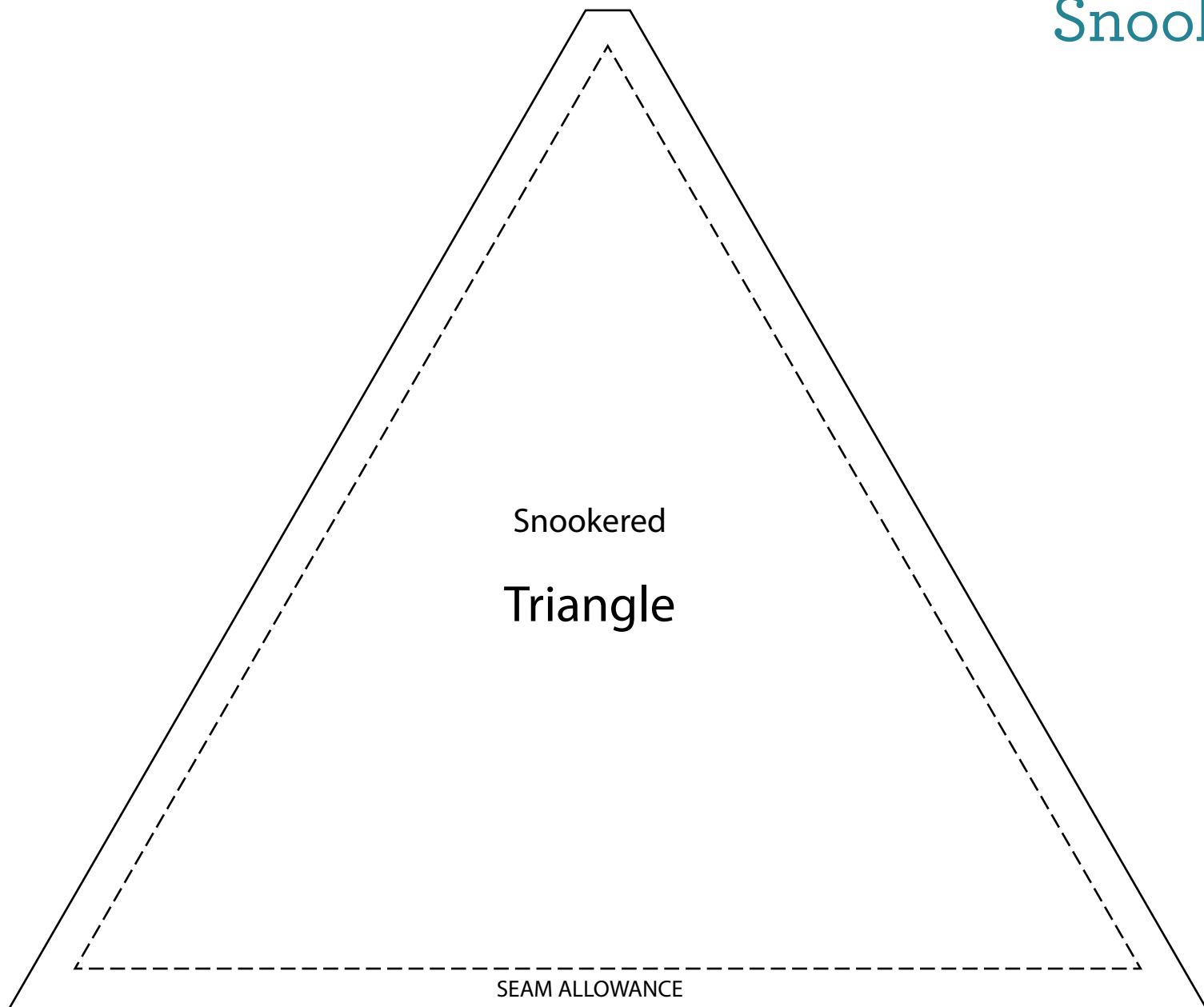
Snookered Quilt



This square should
measure 1" x 1"
(2.54cm x 2.54cm)
when printed.

***** Measure templates before cutting to confirm printing at 100%*****

Snookered Quilt



This square should
measure 1" x 1"
(2.54cm x 2.54cm)
when printed.

***** Measure templates before cutting to confirm printing at 100%*****