

Autumn Postcard Quilt



Featuring Kaffe Fassett Collective

Finished Size: 84³/₄" x 84³/₄" (2.15m x 2.15m)

Project designed by Liza Prior Lucy

Technique: Pieced | **Skill Level:** Advanced for quilters who love a challenge

Autumn Postcard Quilt



Fabric Requirements - Fabric Key on next page

DESIGN	COLOR	ITEM ID	YARDAGE
(1) Millefiore	Dusty	PWGP092.DUSTY	2¼ yards (2.06m)
(2) Millefiore	Orange	GP92.ORAN	½ yard (0.46m)
(3) Flora	Antique	PWPJ114.ANTIQUE	2⅛ yards (1.94m)
(4) Lotus Leaf	Red	GP29.REDD	1⅞ yards (1.03m)
(5) Jumble	Teal	PWBM053.TEAL	1⅓ yards (1.22m)
(6) Roman Glass	Gold	GP01.GOLD	7⁄8 yard (0.80m)
(7) Paperweight	Pumpkin	GP20.PUMPK	3⁄8 yard (0.34m)
(8) Paperweight	Grey	PWGP020.GREYX	⅛ yard (0.11m)
(9) Paperweight	Blue	PWGP20.BLUEX	⅛ yard (0.11m)
(10) Amaze	Grey	PWBM078.GREY	¼ yard (0.23m)
(11) Aboriginal Dot	Maroon	PWGP071.MAROO	⅓ yard (0.31m)
(12) Aboriginal Dot	Wisteria	PWGP071.WISTE	¼ yard (0.23m)
(13) Aboriginal Dot	Pumpkin	PWGP071.PUMPK	¼ yard (0.23m)
(14) Spot	Tobacco	GP70.TOBAC*	1½ yards (1.37m)
(15) Spot	Pacific	PWGP070.PACIFIC	½ yard (0.46m)
(16) Spot	Sage	PWGP070.SAGE	½ yard (0.46m)
(17) Spot	Charcoal	GP70.CHARC	⅛ yard (0.11m)
(18) Spot	Pond	PWGP070.PONDY	⅛ yard (0.11m)
(19) Spot	Plum	PWGP070.PLUMX	½ yard (0.46m)
(20) Spot	Autumn	PWGP070.AUTUMN	⅛ yard (0.11m)
(21) Spot	Storm	PWGP070.STORM	¼ yard (0.23m)
(22) Sharks Teeth	Carnival	PWBM060.CARNIVAL	⅛ yard (0.11m)

* includes binding

Backing (Purchased Separately)

44" (1.12m) wide			7¾ yards (7.09m)
OR			
108" (2.74m) wide			
Lotus Leaf	Purple	QBG007.PURPLE	2⅝ yards (2.40m)

Additional Requirements

- The Kaffe Collective 100% Aurifil Cotton Thread 50wt in colors to match
- 94" x 94" (2.39m x 2.39m) batting

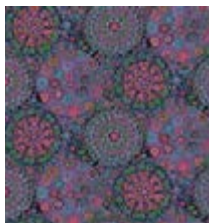
Optional supplies

- Kaffe Fassett Design Wall Flannel Grid
- Heavy duty template plastic
- Invisi-Grip (for back of template plastic)
- Spray starch or starch alternative
- Removable fabric marker or pencil

Autumn Postcard Quilt



Fabric Key



(1)



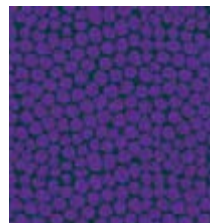
(2)



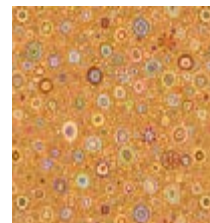
(3)



(4)



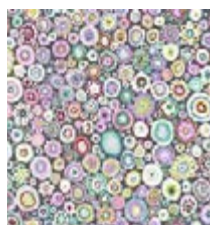
(5)



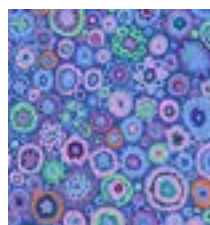
(6)



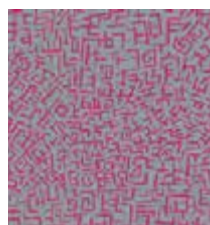
(7)



(8)



(9)



(10)



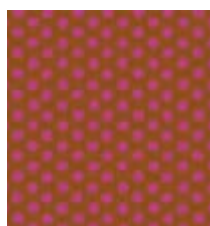
(11)



(12)



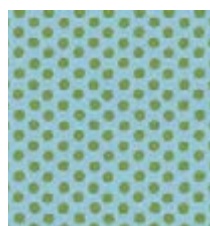
(13)



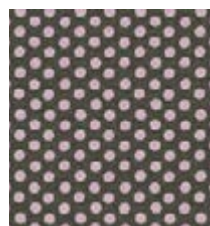
(14)



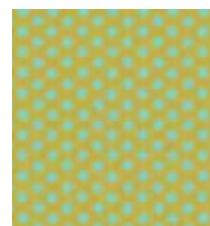
(15)



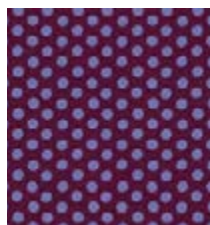
(16)



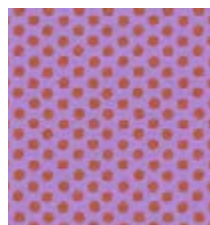
(17)



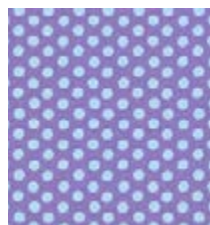
(18)



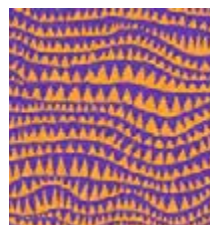
(19)



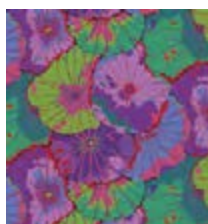
(20)



(21)



(22)



**Backing
108"**

Autumn Postcard Quilt



CUTTING AND PIECING

Fabric is cut across the width of fabric (WOF) unless otherwise stated. Use ¼" seams throughout.

It may be helpful to use spray starch on some fabric before cutting. Using the Kaffe Fassett Design Wall Flannel Grid will help to place patches in the required layout during making.

This quilt is a series of ten borders around a medallion center. The cutting and piecing instructions are offered together for the center and each border as it builds outward. It is suggested cutting and piecing as you go. **Please read the entire instructions carefully before beginning.** Be sure to allow fabric for larger shapes that come later in the process. Only cut a strip long enough for the required pieces, rather than the full WOF, when only cutting a few pieces.

Borders 3 and 4 are made oversize and will be trimmed to fit (some steam and blocking may be needed to make these behave). All other borders are made to fit but because of bias, tiny pieces and odd shapes, it will be necessary occasionally to ease one border to the next. It is **NOT** recommended that you trim each border or square up each time you make a round. The fabric is flexible and forgiving (Note if you are using fabrics other than those used in the sample quilt, they may have a different degree of give). **Many of the pieces are odd sizes so careful cutting is VERY important.** If you choose different construction techniques than used here, your cutting and fabric requirements may differ.

Refer to 'quilting and patchwork know-how' in *Quilts by The Sea* by Kaffe Fassett (or your favorite Kaffe Fassett book from The Taunton Press) for additional information on making and using templates, cutting fabric, piecing and finishing. WOF grain placement is indicated by double-headed arrows on template patterns.

CENTER MEDALLION

Cutting

Square A:

From **Fabric 1** Millefiore-Dusty fussy cut 1 square at 1½" from the center of a millefiore motif.

Rectangle B:

From **Fabric 13** Aboriginal Dot-Pumpkin cut 4 rectangles 1½" x 2".

Triangle C:

From each of **Fabric 12** Aboriginal Dot-Wisteria and **Fabric 21** Spot-Storm cut 2 squares at 2¾". Cut each square in half diagonally once to yield a total of 4 half-square triangles (HSTs) from each fabric.

Square D:

From **Fabric 11** Aboriginal Dot-Maroon cut 4 squares at 2½".

Triangle E:

Cut squares at 2¾" from fabrics as follows: Fabric 6 Roman Glass-Gold – 6 squares, **Fabric 10** Amaze-Grey – 4 squares and **Fabric 13** Aboriginal Dot-Pumpkin – 2 squares. Cut each square in half diagonally once to yield twice as many HSTs from each fabric.

Square F:

From **Fabric 14** Spot-Tobacco cut 12 squares using the **Center F template**.

Triangle G:

Cut squares at 3¼" from fabrics as follows: Fabric 5 Jumble-Teal – 8 squares and **Fabric 14** Spot-Tobacco – 2 squares. Cut each square in half twice diagonally to yield 4 quarter-square triangles (QSTs) from each square, 32 from **Fabric 5** and 8 from **Fabric 14**.

Autumn Postcard Quilt



Making the Center Medallion

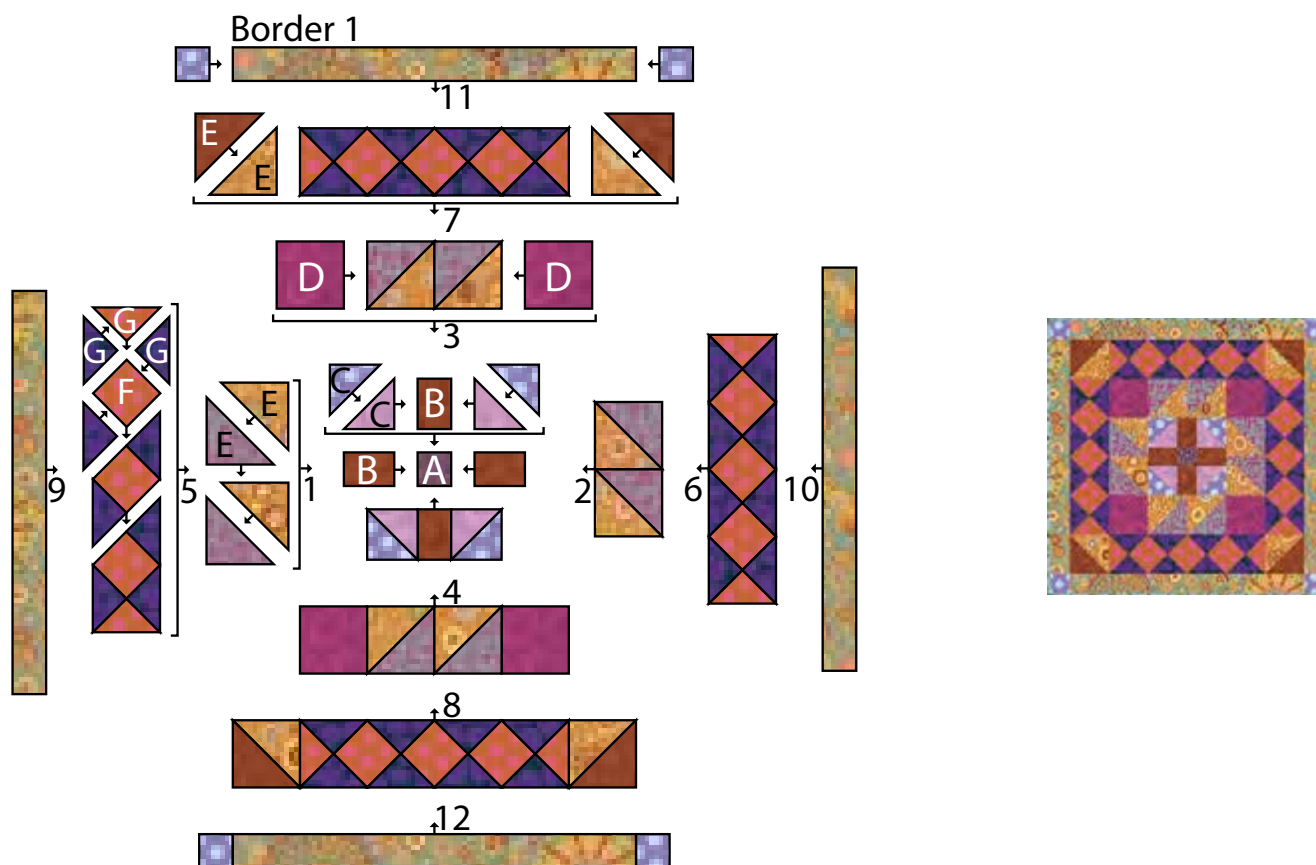
Piece the Triangles C into 4 HST Units, each with a **Fabric 12** and **Fabric 21** HST.

Piece the Triangles E into 8 HST Units, each with a **Fabric 6** and **Fabric 10** HST, and 4 HST units with **Fabric 6** and **Fabric 13** HSTs.

If needed, trim the C HST Units to 2" square (1½" finished), and the E HST units to 2½" square (2" finished).

Piece the center as shown in **Diagram 1**, starting with A, B, and C, then following the stages as numbered.

DIAGRAM 1



BORDER 1—PLAIN WITH CORNER POSTS

Cutting

Border:

From **Fabric 2** Millefiore-Orange cut 2 strips 1½" wide and crosscut 4 border strips 12½" x 1½".

Corner Squares:

From **Fabric 21** Spot-Storm cut 4 squares at 1½".

Making and Adding Border 1

Join a border strip to the left and right sides of the center medallion. Join a corner square to each end of the remaining 2 border strips and sew to the top and bottom of the center medallion as shown in **Diagram 1** above.

Autumn Postcard Quilt



BORDER 2—SMALL FLYING GEESE



Cutting

Triangle/QST 2A:

From **Fabric 1** Millefiore-Dusty cut 2 strips $3\frac{1}{4}$ " wide and crosscut 14 squares at $3\frac{1}{4}$ ". Cut each square in half diagonally twice to yield 56 quarter-square triangles (QSTs).

Triangle/HST 2B:

From **Fabric 16** Spot-Sage cut 3 strips $1\frac{7}{8}$ " wide and crosscut 56 squares at $1\frac{7}{8}$ ". Cut each square in half diagonally once to yield 112 half-square triangles (HSTs).

Triangle/HST 2C:

From the remaining WOF strip of **Fabric 1** Millefiore-Dusty cut 2 squares $2\frac{7}{8}$ " x $2\frac{7}{8}$ ". Cut each square in half diagonally once to yield 4 HSTs.

From **Fabric 15** Spot-Pacific cut 2 squares $2\frac{7}{8}$ " x $2\frac{7}{8}$ ". Cut each square in half diagonally once to yield 4 HSTs.

Making and Adding Border 2

Referring to **Diagram 2**, piece 56 Small Flying Geese blocks using a **Fabric 1** QST and 2 **Fabric 16** HSTs for each. The completed blocks should be $1\frac{1}{2}$ " x $2\frac{1}{2}$ " (1 " x 2 " finished).

DIAGRAM 2



Referring to **Diagram 4b** (page 9), join the blocks into 4 rows of 14 blocks with all the Geese pointing in the same direction.

Join a Flying Geese row to the left and right sides of the center, arranging them so the **Fabric 1** triangles will point in a counterclockwise direction around the center. Piece the Triangle/HST 2C into 4 HST Units, each with a **Fabric 1** and **Fabric 15** HST. If needed, trim the HST units to $2\frac{1}{2}$ " square (2 " finished). Sew a HST Unit to each end of the remaining 2 rows of Flying Geese blocks, oriented as shown in diagram 4b, and join them to the top and bottom.

Autumn Postcard Quilt



BORDER 3—CARD TRICK



Cutting

Rectangle 3A:

From **Fabric 7** Paperweight-Pumpkin cut 2 strips 3" wide and crosscut 28 rectangles 3" x 2".
From **Fabric 6** Roman Glass-Gold cut 1 strip 3" x WOF and crosscut 12 rectangles 3" x 2".

Triangle/QST 3B:

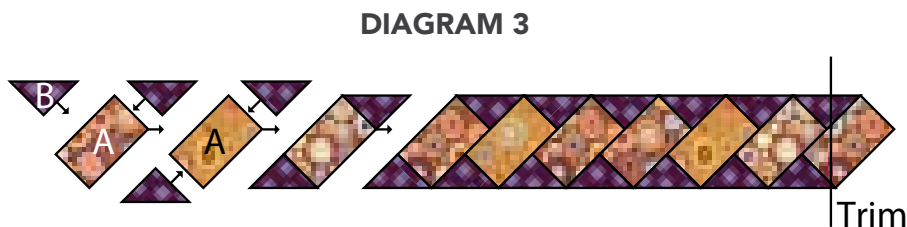
From **Fabric 19** Spot-Plum cut 2 strips 3¼" wide and crosscut 19 squares at 3¼". Cut each square in half diagonally twice to yield 72 QSTs.

Corner Square 3C:

From **Fabric 10** Amaze-Grey cut 4 squares 3¼" x 3¼".

Making and Adding Border 3

Referring to **Diagram 3**, arrange 4 Border 3 sections as shown, each with a total of 10 rectangles (7 of **Fabric 7** and 3 of **Fabric 6**) and 19 Fabric QST 3B. Sew triangles to the rectangle ends as shown, then sew the sections together. Trim each border section to 3¼" x 18½".



Referring to **Diagram 4b** (page 9) for orientation, join the left and right side borders to the center. Sew a Corner Square 3C to each end of the remaining 2 borders and join them to the top and bottom.

Autumn Postcard Quilt



BORDER 4—DIAMONDS



Cutting

Diamond Template 4A:

From **Fabric 5** Jumble-Teal cut 4 strips $2\frac{1}{4}$ " wide and using **Diamond Template 4A**, cut 56 diamonds.
From **Fabric 14** Spot-Tobacco cut 3 strips $2\frac{1}{4}$ " wide and using **Diamond Template 4A**, cut 32 diamonds.
Each strip will yield 14 diamonds.

Diamond Template 4B:

From **Fabric 14** Spot-Tobacco cut 5 strips $1\frac{5}{8}$ " wide and using **Diamond Template 4B**, cut 64 half diamonds.
Each strip will yield 13 half diamonds if the template is rotated 180° after each cut.

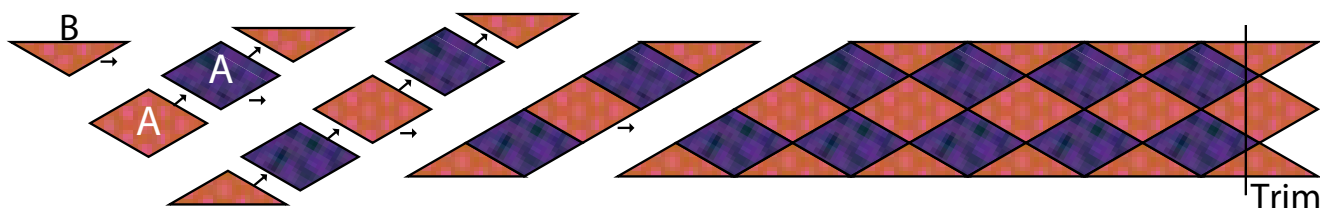
Corner Square 4C:

From each of **Fabric 8** Paperweight-Grey and **Fabric 15** Spot-Pacific, cut 8 squares $2\frac{1}{2}$ " x $2\frac{1}{2}$ ".

Making and Adding Border 4

Referring to **Diagram 4a**, piece 4 Border 4 sections, sewing the diamonds and half diamonds together in diagonal rows, then sew the rows together. Trim each Border 4 section to 24" long. Sew the **Fabric 8** and **Fabric 15** corner squares together into 4-square patches.

DIAGRAM 4a



Autumn Postcard Quilt



Referring to **Diagram 4b**, join the side borders to the center. Sew a corner 4-square patch to each end of the remaining 2 borders, ensuring the **Fabric 15** squares are in the inner and outer corners, then join them to the top and bottom.

DIAGRAM 4b



Autumn Postcard Quilt



BORDER 5—SMALL 9-PATCHES ON POINT



Cutting

Square 5A:

From each of the following fabrics: **Fabric 2** Millefiore-Orange, **Fabric 6** Roman Glass-Gold, **Fabric 7** Paperweight-Pumpkin, **Fabric 9** Paperweight-Blue, **Fabric 11** Aboriginal Dot-Maroon, **Fabric 12** Aboriginal Dot-Wisteria, **Fabric 14** Spot-Tobacco, **Fabric 16** Spot-Sage, **Fabric 17** Spot-Charcoal, **Fabric 18** Spot-Pond, **Fabric 19** Spot-Plum, **Fabric 20** Spot-Autumn, **Fabric 21** Spot-Storm and **Fabric 22** Sharks Teeth-Carnival:

Cut a strip 1 $\frac{3}{4}$ " wide and crosscut 20 squares at 1 $\frac{3}{4}$ " (there will be extras - only 216 squares are required for the 24 small 9-patch blocks).

Triangle/QST 5B:

From **Fabric 1** Millefiore-Dusty cut 2 strips 6 $\frac{1}{2}$ " wide and crosscut 10 squares at 6 $\frac{1}{2}$ ". Cut each square in half diagonally twice to yield 4 QSTs from each square, 40 QSTs in total.

Triangle/HST 5C:

From **Fabric 1** Millefiore-Dusty cut 8 squares at 3 $\frac{5}{8}$ ". Cut each square in half diagonally once to yield 2 HSTs from each square, 16 HSTs in total.

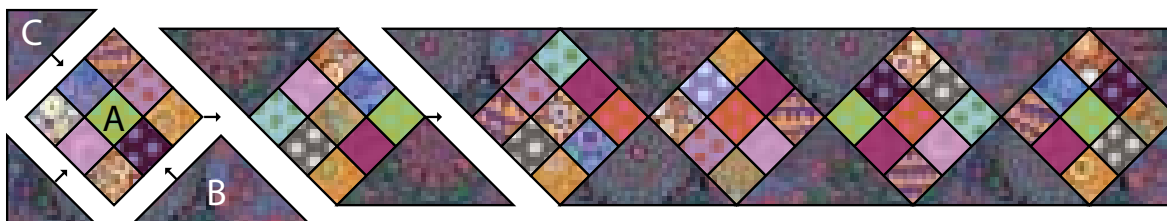
Corner Square 5D:

From **Fabric 3** Flora-Antique cut a strip 5 $\frac{3}{4}$ " wide and crosscut 4 squares at 5 $\frac{3}{4}$ ".

Making and Adding Border 5

Referring to **Diagram 5** and the quilt photograph, make 24 small 9-patch blocks, each using a random selection from the 5A squares cut from **Fabrics 2, 6, 7, 9, 11, 12, 14, and 16—22** as follows: for each 9-patch block, sew squares into 3 rows of 3, then sew the rows together to form the 9-patch (4 $\frac{1}{4}$ " square, or 3 $\frac{3}{4}$ " finished). Piece the 9-patch blocks into 4 borders, sewing 5B and 5C triangles to blocks as shown, then sewing the sections together to form the borders.

DIAGRAM 5



Autumn Postcard Quilt



Referring to **Diagram 6**, join the side borders to the center. Sew a **Fabric 3** Flora-Antique Corner Square 5D to each end of the remaining 2 borders, then join them to the top and bottom.

DIAGRAM 6



Autumn Postcard Quilt



BORDER 6—PLAIN WITH HST CORNER UNITS



Cutting

Border:

From **Fabric 15** Spot-Pacific cut 5 strips 2" x WOF. Remove selvages and sew together end to end, pressing seams open. From the length cut 4 border pieces 2" x 42½".

Triangle/HST 6A:

From each of **Fabric 5** Jumble-Teal and **Fabric 10** Amaze-Grey cut 2 squares 2¾" x 2¾". Cut each square in half diagonally once to yield 4 HSTs from each fabric.

Making and Adding Border 6

Referring to **Diagram 6** and the quilt photograph, sew pairs of **Fabric 10** and **Fabric 11** 6A triangles together to form 4 HST units for corner squares. If needed, trim the HST Units to 2" square (1½" finished).

Join **Fabric 15** borders to the left and right sides. Sew an HST corner square to each end of the remaining 2 **Fabric 15** borders, ensuring the **Fabric 10** triangle is on the outside of the corner, then join them to the top and bottom.

BORDER 7—STREAK OF LIGHTNING



Cutting

Rectangle 7A:

From **Fabric 6** Roman Glass-Gold cut 3 strips 4¾" wide and crosscut 52 rectangles using template 7A. Each strip will yield 20 rectangles.

Trapezoid Templates 7B and 7C:

From **Fabric 6** Roman Glass-Gold, cut 4 trapezoids using **Trapezoid Template 7B** and 4 trapezoids using **Trapezoid Template 7C**.

Triangle/QST 7D:

From **Fabric 3** Flora-Antique cut 3 strips 7¼" wide and crosscut 14 squares at 7¼". Cut each square in half diagonally twice to yield 4 QSTs from each square, 56 QSTs in total.

Triangle/HST 7E:

From the remaining **Fabric 3** Flora-Antique strips, crosscut 4 squares at 3⅞". Cut each square in half diagonally once to yield 8 HSTs.

Corner Triangle/HST 7F:

From each of **Fabric 2** Millefiore-Orange and **Fabric 11** Aboriginal Dot-Maroon crosscut 8 squares at 3⅞". Cut each square in half diagonally once to yield 16 HSTs from each fabric.

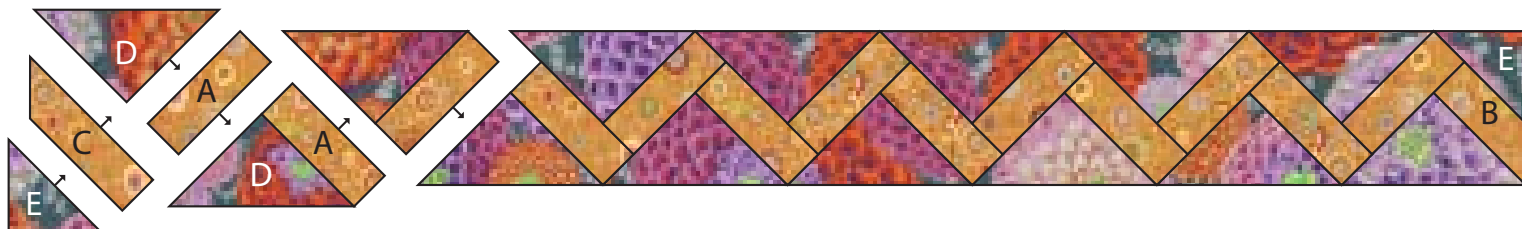
Autumn Postcard Quilt



Making and Adding Border 7

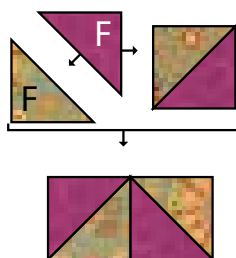
Referring to **Diagram 7a** and the quilt photograph, lay out the **Fabric 6** 7A rectangles and 7B and 7C trapezoids as well as the **Fabric 3** QSTs and HSTs. Sew the patches into sections as shown in the diagram, sew the sections together, starting with units on the right-hand side of the diagram and working towards the left-hand side to complete each border. Each border should measure 5½" wide x 45½" long.

DIAGRAM 7a



Sew the **Fabric 2** and **Fabric 10** 7F corner triangles together in pairs to make 3" HST units. Sew sets of 2 HST units together, then sew 2 sets together to make each corner pinwheel block, 5½" square (5" finished).

DIAGRAM 7b



Referring to **Diagram 6** (page 11), join a border 7 to the left and right sides. Sew a corner pinwheel block to each end of the remaining 2 borders, oriented as shown, then join them to the top and bottom.

Autumn Postcard Quilt



BORDER 8—LARGE FLYING GEESE



Cutting

Triangle/QST 8A:

From **Fabric 4** Lotus Leaf-Red cut 4 strips $6\frac{3}{4}$ " wide and crosscut 20 squares at $6\frac{3}{4}$ ". Each strip will yield 6 squares. Cut each square in half diagonally twice to yield 4 QSTs from each square, 80 QSTs in total.

Triangle/HST 8B:

From **Fabric 1** Millefiore-Dusty cut 8 strips $3\frac{5}{8}$ " wide and crosscut 80 squares at $3\frac{5}{8}$ ". Each strip will yield 11 squares. Cut each square in half diagonally once to yield 2 HSTs from each square, 160 HSTs in total.

Triangle/HST 8C:

From each of **Fabric 1** Millefiore-Dusty and **Fabric 2** Millefiore-Orange cut 2 squares $4\frac{3}{8}$ " x $4\frac{3}{8}$ ". Cut each square in half diagonally once to yield 4 HSTs from each fabric for the corner blocks.

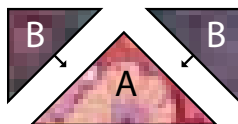
Trapezoid Template 8D:

From **Fabric 16** Spot-Sage cut 3 strips $1\frac{1}{2}$ " wide and use **Trapezoid Template 8D** to cut 16 Trapezoids, rotating the template 180° after each cut. Each strip will yield 6 trapezoids.

Making and Adding Border 8

Referring to **Diagram 8a**, piece 80 Large Flying Geese blocks using a **Fabric 4** QST and 2 **Fabric 1** HSTs for each. The completed blocks should be 6 " x $3\frac{1}{4}$ " ($5\frac{1}{2}$ " x $2\frac{3}{4}$ " finished).

DIAGRAM 8a

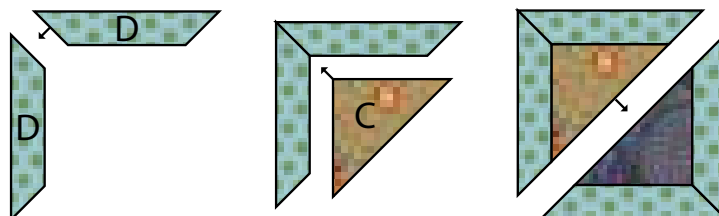


Join the blocks into 4 rows of 20 blocks with all the Geese pointing in the same direction. Referring to the **Quilt Layout** diagram (page 17), join a Flying Geese row to the left and right sides, arranging them so the **Fabric 4** triangles will point in a counterclockwise direction around the center.

Referring to **Diagram 8b**, sew pairs of Trapezoids 8D together, then add Triangles 8C in **Fabrics 1** and **2** to construct 4 corner blocks using the inset seam method.

Referring to the **Quilt Layout** diagram (page 17), join a corner block to each end of the remaining 2 Flying Geese rows, so that the **Fabric 1** triangles are oriented towards the Geese as shown. Then join them to the top and bottom.

DIAGRAM 8b



Autumn Postcard Quilt



BORDER 9—LARGE 9-PATCHES ON POINT



Notes:

- This border may require a test block to determine the ideal seam allowance. Using scraps, make a nine-patch block from $2\frac{1}{8}$ " squares using a scant $\frac{1}{4}$ " seam allowance. After pressing, the diagonal measurement of your block (from corner to corner) needs to measure $7\frac{3}{4}$ " including the seam allowance.
- If it is smaller, you can either reduce your seam allowance if it will still allow for stable block construction or cut $2\frac{1}{4}$ " squares and sew with a generous $\frac{1}{4}$ " seam allowance.
- Again, measure the diagonal and if larger, trim evenly from all 4 sides to yield a block with a $7\frac{3}{4}$ " diagonal measurement.

Mark the ideal seam allowance on your sewing machine and proceed to cut the A squares in the size that works best for you.

Cutting

Square 9A:

From each of the following fabrics: **Fabric 2** Millefiore-Orange, **Fabric 4** Lotus Leaf-Red, **Fabric 6** Roman Glass-Gold, **Fabric 7** Paperweight-Pumpkin, **Fabric 8** Paperweight-Grey, **Fabric 9** Paperweight Blue, **Fabric 10** Amaze-Grey, **Fabric 11** Aboriginal Dot-Maroon, **Fabric 12** Aboriginal Dot-Wisteria, **Fabric 13** Aboriginal Dot-Pumpkin, **Fabric 14** Spot-Tobacco, **Fabric 17** Spot-Charcoal, **Fabric 18** Spot-Pond, **Fabric 19** Spot-Plum, **Fabric 20** Spot-Autumn, **Fabric 21** Spot-Storm and **Fabric 22** Sharks Teeth-Carnival:

Cut 1 strip the size you determined in your test 9-patch block and crosscut as many squares as possible from the strip.

Use any leftover pieces of these fabrics to cut additional squares. 324 squares are required for the 36 large 9-patch blocks, but you may wish to cut extras for more variety.

Triangle/QST 9B:

From **Fabric 3** Flora-Antique cut 4 strips $8\frac{1}{2}$ " wide and crosscut 16 squares at $8\frac{1}{2}$ ". Cut each square in half diagonally twice to yield 4 QSTs from each square, 64 QSTs in total.

Triangle/HST 9C:

From **Fabric 3** Flora-Antique cut a strip $4\frac{1}{2}$ " wide and crosscut 8 squares at $4\frac{1}{2}$ ". Cut each square in half diagonally once to yield 2 HSTs from each square, 16 HSTs in total.

Corner Square 9D:

From **Fabric 1** Millefiore-Dusty cut a strip $7\frac{3}{4}$ " wide and crosscut 4 squares at $7\frac{3}{4}$ ".

Making and Adding Border 9

Referring to the **Quilt Layout** diagram (page 17) and the quilt photograph, make 36 large 9-patch blocks ($5\frac{3}{8}$ " square, or $4\frac{7}{8}$ " finished), each using a random selection from the 324 9A squares cut from **Fabrics 2, 4, 6—14, and 17—22**, in the same manner as the small 9-patch blocks (page 10). Piece the 9-patch blocks into 4 borders, sewing 9B and 9C triangles to blocks in the same manner as for Border 5, then sew the sections together to form the borders. Join the left and right borders to the quilt top, pinning ends and centers and easing as needed. Sew a 9D square to each end of the remaining 2 borders, then join them to the top and bottom in the same manner. (If borders are shorter than needed when complete it is recommended that coping strips are added to make the border the necessary length.)

Autumn Postcard Quilt



BORDER 10—PLAIN



Cutting

Border:

From **Fabric 5** Jumble-Teal cut 8 strips 3" wide. Remove selvedge and join strips end to end, using $\frac{1}{4}$ " seams, and press seams open.

Making and Adding Border 10

Measure the quilt top vertically through the center and cut 2 side border strips to fit.

Match ends and centers, then join the side border pieces to the left and right sides of the quilt top.

Repeat the previous step to measure horizontally, cut, and join the 2 longer border pieces to the top and bottom of the quilt top.

FINISHING

Backing

Press the quilt top. Layer the quilt top, batting and backing, and baste together. Quilt as desired.

Binding

From **Fabric 14** Spot-Tobacco cut 9 strips $2\frac{1}{2}$ " wide. Remove selvedge and sew end to end with 45° seams. Trim the quilt edges and attach the binding.

From a design by Liza Prior Lucy in Kaffe Fassett's Quilts by the Sea

Copyright Taunton Press Inc 2023

Text copyright Kaffe Fassett/Liza Prior Lucy 2023

Autumn Postcard Quilt



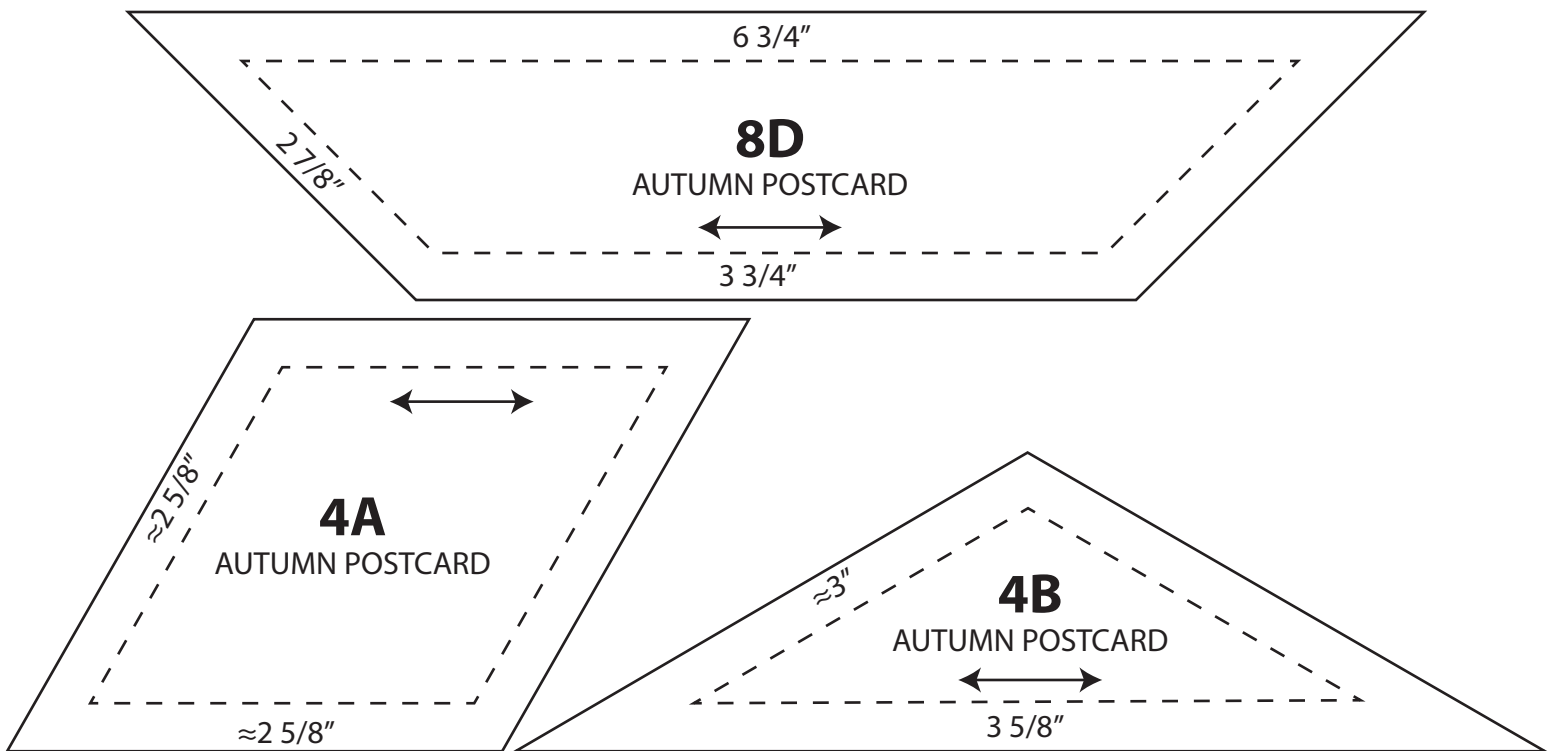
QUILT LAYOUT DIAGRAM



Autumn Postcard Quilt



TEMPLATES

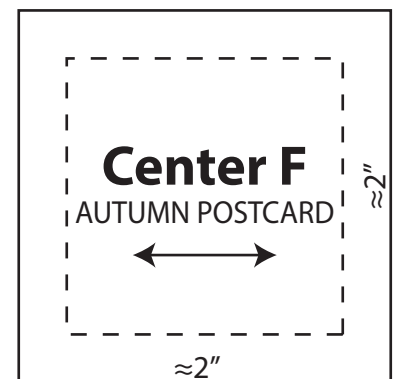
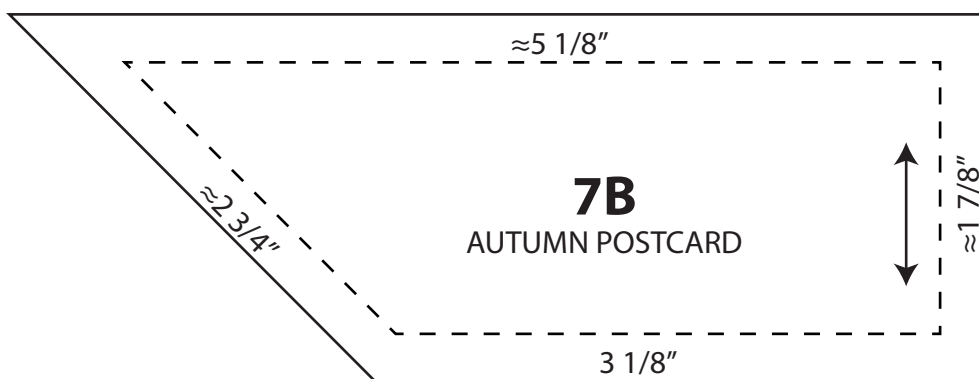
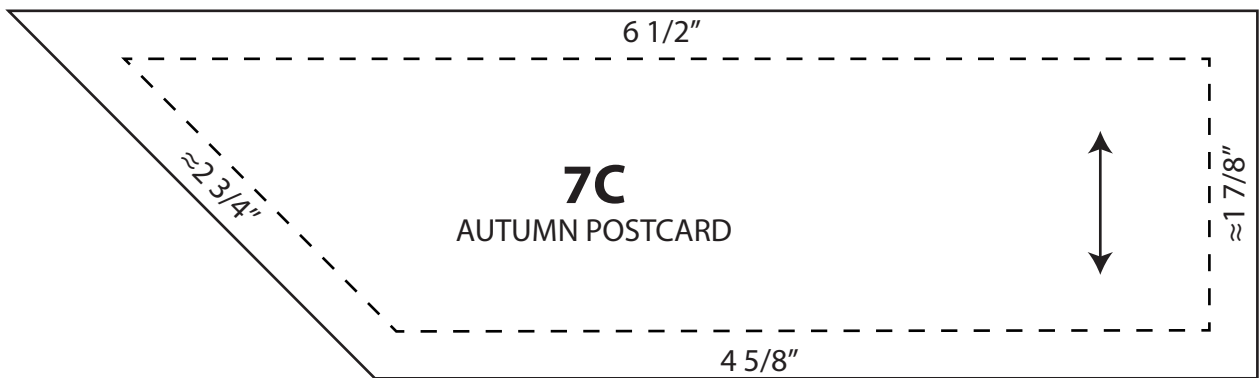
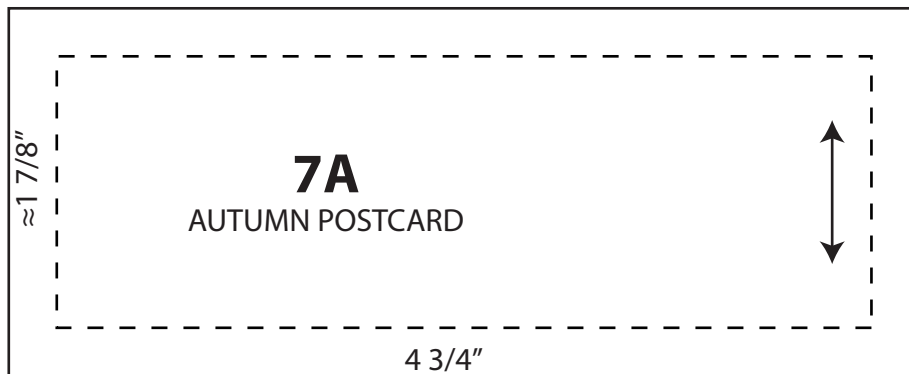


This square should measure 1" x 1" (2.54cm x 2.54cm) when printed.

Autumn Postcard Quilt



TEMPLATES



This square should
measure 1" x 1"
(2.54cm x 2.54cm)
when printed.