

KAFFE
FASSETT
COLLECTIVE
for

Free Spirit

Harlequin

Featuring Kaffe Fassett Artisan Collection

Squares cut from the Embroidered Flower Stripe from the Kaffe Fassett Artisan Collection take center stage in this bold and colorful quilt. Large squares are set on point and then transform into rectangular blocks with the addition of multiple sashing strips. The bold outer borders are fussy-cut from the same stripe so the design is continuous. This design is the perfect choice for anyone who loves eclectic quilts cut from the bold designs and colors for which Kaffe Fassett is known.

Collection: Kaffe Fassett Artisan Collection

Technique: Patchwork piecing, Quilting

Skill Level: Advanced Beginner

Crafting Time: Longer*

Finished Size: Finished Size of Project:
56 1/2" x 71 1/2" (143.51 m x 181.61cm)
Finished Block Size:
15" x 20" (38.10cm x 50.80cm)

*Crafting time based on Advanced Beginner skill level



COATS

Harlequin

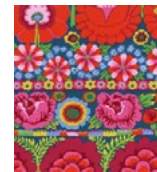


Project designed by Linda and Carl Sullivan of Colourwerx

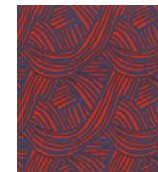
Tech edited by Barbara Weiland

Fabric Requirements

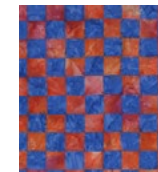
| DESIGN | COLOR | ARTICLE CODE | YARDAGE |
|-------------------------------|---------|---------------|--------------------|
| (A) Embroidered Flower Stripe | Red | PWKF001.REDXX | 4½ yards (4.11m)** |
| (B) Raked | Algae | PWKF004.ALGAE | 1½ yards (1.37m)* |
| (C) Chess | Red | BKKF006.0REDX | ⅝ yard (54.61cm) |
| (D) Flags | Blue | BKKF003.0BLUE | ⅝ yard (54.61cm) |
| (E) Saw Circles | Orange | BKKF001.0ORAN | ⅝ yard (54.61cm) |
| (F) Layered Stripe | Red | PWKF003.REDXX | ¾ yard (68.58cm) |
| (G) Squiggle | Red | PWKF005.REDXX | ⅓ yard (30.48cm) |
| (H) Gerbera | Magenta | PWKF006.MAGEN | ⅝ yard (54.61cm) |



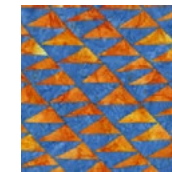
(A)



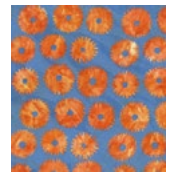
(B)



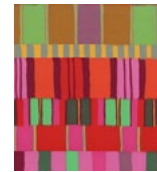
(C)



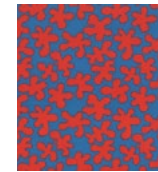
(D)



(E)



(F)



(G)



(H)



Backing
44"
(111.76cm)

* includes binding

** Borders require fussy cutting, which increases yardage.

Backing (Purchased Separately)

44" (111.76cm)

| | | | |
|------------|-----|---------------|------------------|
| Paint Pots | Red | PWKF002.REDXX | 4½ yards (4.11m) |
|------------|-----|---------------|------------------|

Additional Requirements

- Coats® Cotton Thread in colors to match fabrics
- 65" x 80" (165.10 x 203.20cm) quilt batting
- Rotary cutter
- Rotary cutting mat
- Quilter's ruler
- Sewing machine
- Iron
- Basic sewing and pressing supplies



COATS

Harlequin

Cutting

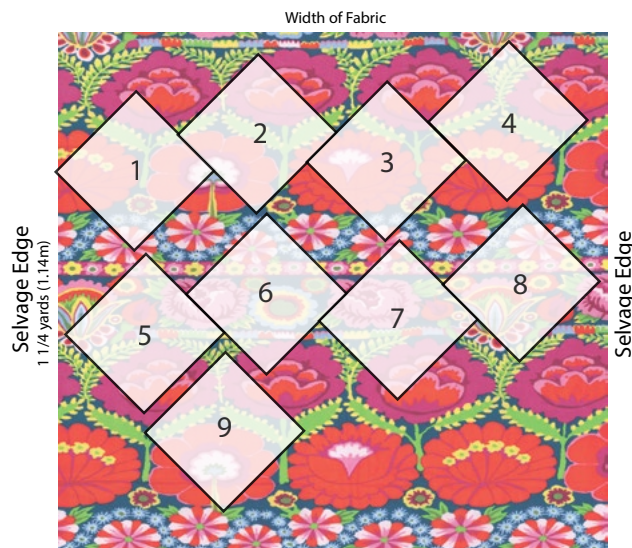
WOF = Width of Fabric

Fussy-cut = Cutting pieces from a print with specifically chosen motifs positioned precisely within a strip or a patchwork piece. You will fussy-cut the outer border strips from **Fabric A** as directed below.

Fabric A, cut:

(9) 9¼" x 9¼" (23.50cm x 23.50cm) squares set on point for the block centers (**Fig. 1**).

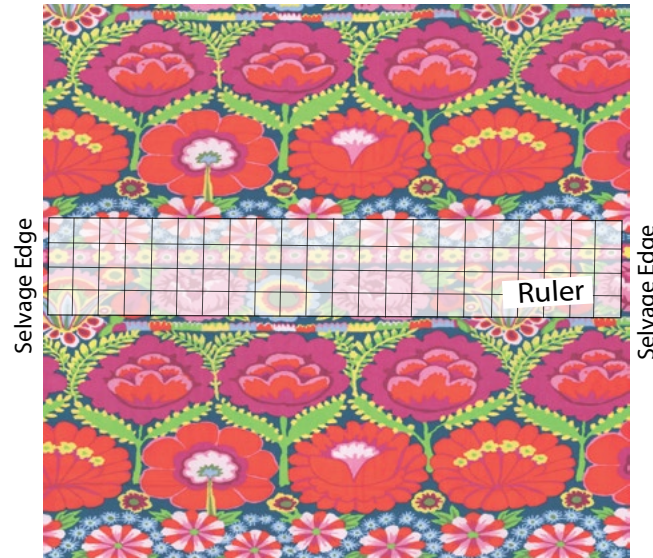
Fig. 1



Cut (9) 9 1/4" (23.49cm) squares on point from Fabric A.

Referring to **Fig. 2** and the **Quilt Layout** on page 8 for stripe and motif placement, center the ruler over the stripes in the remaining fabric to fussy-cut (8) identical 5½" x WOF (13.97cm) strips for the outer border (**Fig. 2**).

Fig. 2



Center flower motif under ruler and cut (8) 5 1/2" (13.97cm) x WOF strips.

From Fabric B, cut:

(9) 1½" x WOF (3.81cm x WOF) strips.
Sub-cut (18) 1½" x 9¼" (3.81cm x 23.50cm) strips and (18) 1½" x 11¼" (3.81cm x 28.58cm) strips for the blocks.

(9) 1¾" x WOF (4.45cm x WOF) strips for the sashing.

(7) 2½" x WOF (6.35cm x WOF) strips for the binding.

From Fabric C, cut:

(2) 8½" x WOF (21.59cm x WOF) strips.
Sub-cut (6) 8½" x 8½" (21.59cm x 21.59cm) squares.
Cut each square in half diagonally to create (12) triangles for the blocks.

From Fabric D, cut:

(2) 8½" x WOF (21.59cm x WOF) strips.
Sub-cut (6) 8½" x 8½" (21.59cm x 21.59cm) squares.
Cut each square in half diagonally to create a total of 12 half-square triangles for the blocks.

Fabric E, cut:

(2) 8½" x WOF (21.59cm x WOF) strips.
Sub-cut (6) 8½" x 8½" (21.59cm x 21.59cm) squares.
Cut each square in half diagonally to create (12) triangles for the blocks.

From Fabric F, cut:

(5) 2¼" x WOF (5.72cm x WOF) strips for block sashing strips

(1) 5½" x WOF (13.97cm x WOF) strip.
Sub-cut (4) 5½" x 5½" (13.97cm x 13.97cm) squares for the outer border corner squares.

From Fabric G, cut:

(4) 2¼" x WOF (5.72cm x WOF) strips for sashing

From Fabric H, cut:

(9) 1" x WOF (2.54cm x WOF) strips for the block sashing

(8) 1" x WOF (2.54cm x WOF) strips for the inner border



COATS

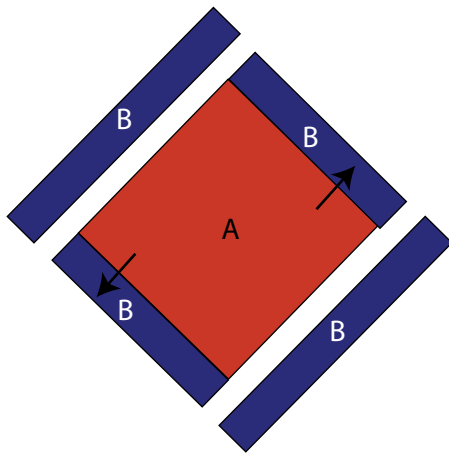
Harlequin

Sewing Instructions

All seam allowances are $\frac{1}{4}$ "-wide (.64cm). Sew the pieces with right sides together.

1. Sew (2) $1\frac{1}{2}$ " x $9\frac{1}{4}$ " (3.81cm x 23.50cm) **Fabric B** strips to opposite edges of a **Fabric A** $9\frac{1}{4}$ " (23.50cm) square. Press the seam allowances toward the strips. Add (2) $11\frac{1}{4}$ " (28.58cm) **Fabric B** strips to the squares and press. Repeat to make a total of 9 **Fabric A/B** squares (**Fig. 3**).

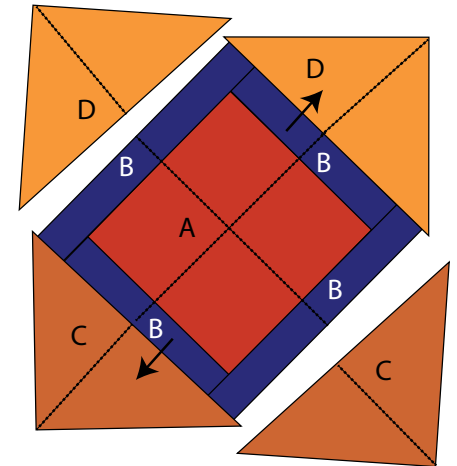
Fig. 3



Stitch Fabric B strips to edges of Fabric A square.

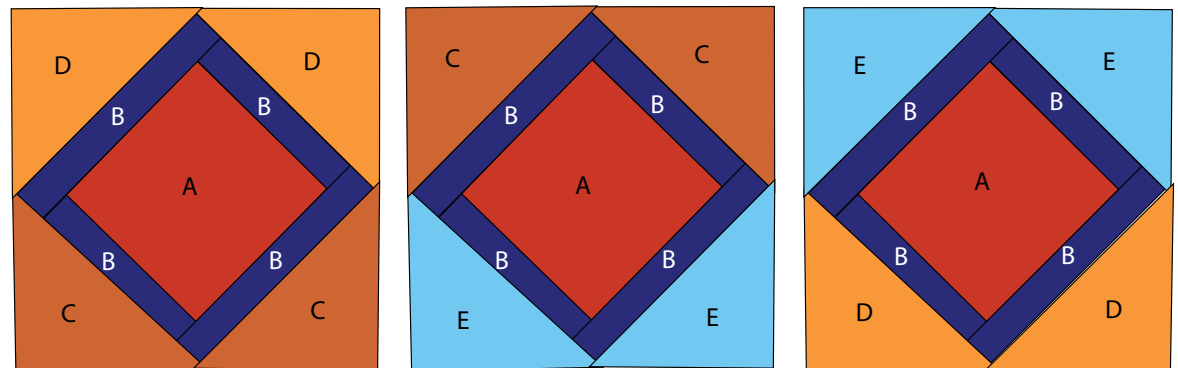
2. Fold each **Fabric C, D,** and **E** half-square triangle in half from the right-angle point to the long edge and finger-press to create a center crease. In the same manner, fold the **Fabric A/B** squares in half lengthwise and then crosswise. Finger-press to create center creases for matching purposes.
3. Referring to **Fig. 4**, match the center crease of a triangle to the center of one edge of a **Fabric A/B** square and sew together. Repeat at the remaining edges and press the seam allowances toward the triangles (**Fig. 4**) shown at right.
4. Using the method in step 4, make 3 squares of each of the fabric combinations shown, taking special note of which fabrics are placed at the upper and lower edges of each set of squares (**Fig. 5**) shown below.

Fig. 4



Stitch the triangles to the Fabric A/B square, lining up the center creases.

Fig. 5



Make 3 of each combination of triangles.

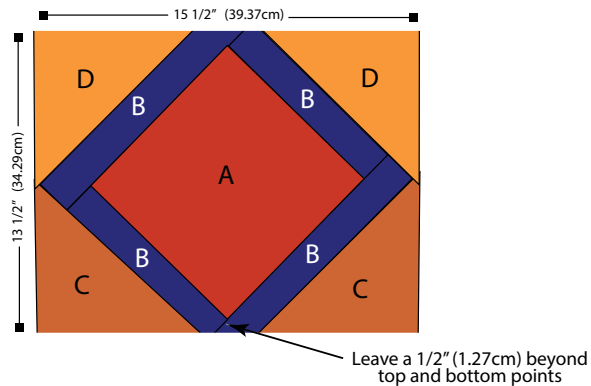
Harlequin



- Trim the resulting blocks to 15½" x 13½" (39.37cm x 34.29cm) as shown.

Note: When trimming the blocks, be sure to leave a ½" (1.27cm) allowance of **Fabric B** above the upper and lower points of the square as shown in **Figure 6**. The flat edge that lies beyond the points of the squares after trimming is intentional. Set the trimmed blocks aside.

Fig. 6

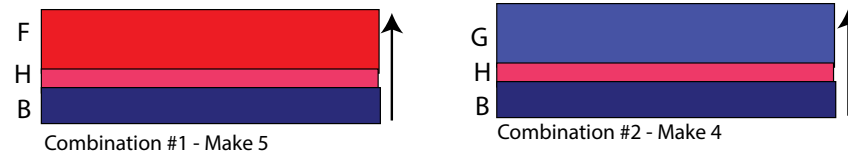


Prepare the Sashing

- Sew the 2¼" x WOF (5.72cm x WOF) strips of **Fabrics B, F, G** and **H** together in the strip-unit combinations shown in **Fig. 7**. Make 5 sets of Combination #1 and 4 sets of Combination #2. Press all seam allowances in the same direction in each strip set (**Fig. 7**).
- Sub-cut each strip set into (2) 4" x 15½" (10.16cm x 39.37cm) strips for a total of 10 units of Combination 1 and 8 units of Combination 2.

- Sew the units from step 7 to the top and bottom edges of each of the 9 blocks as shown. Make 5 blocks using the Combination #1 strip sets and 4 blocks using Combination #2 strip sets (**Fig. 8**) on page 6. Press the seam allowances toward the strip sets. When complete, each unit should measure 15½" x 20½" (39.37cm x 52.07cm).

Fig. 7

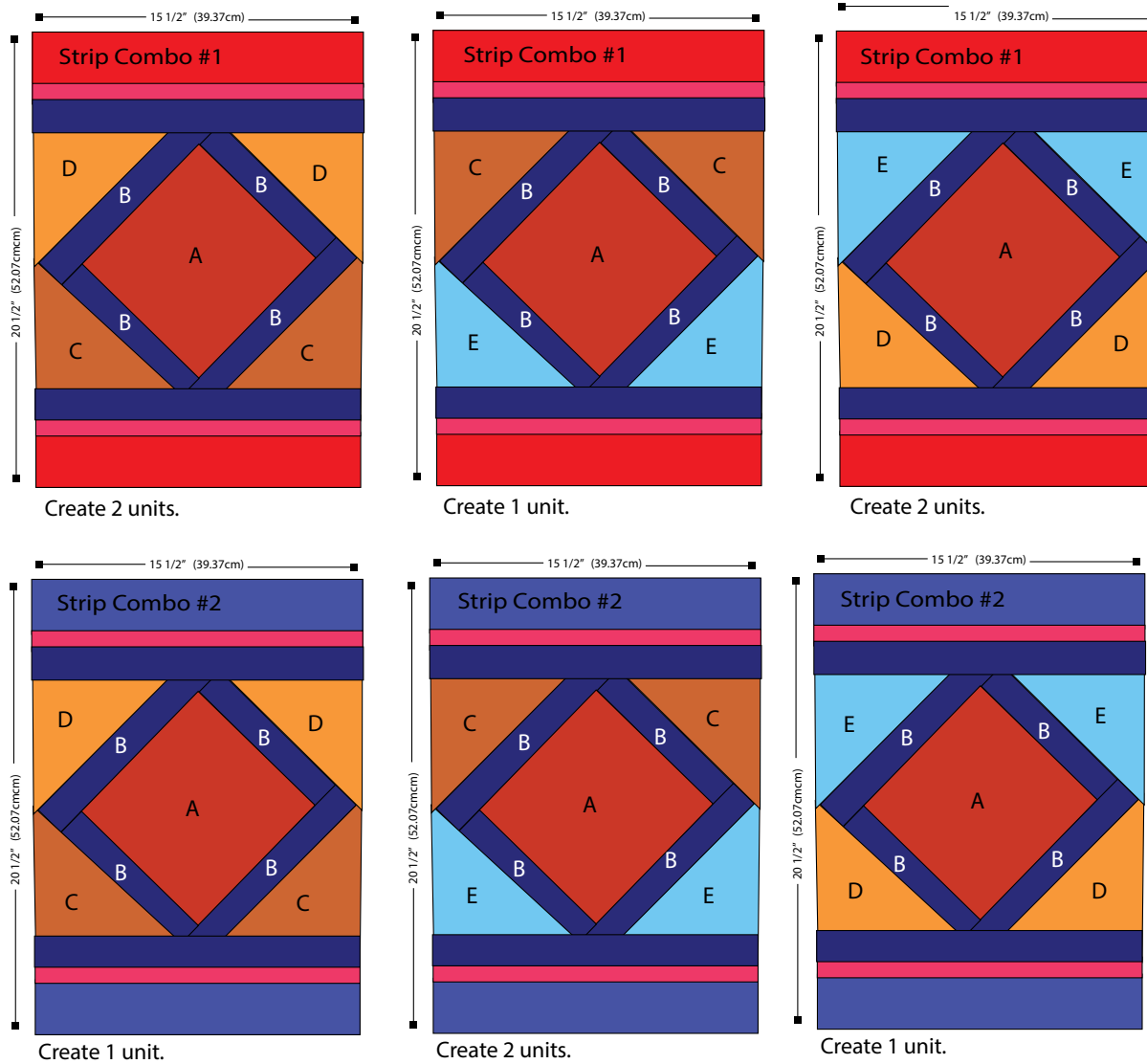


Cut each strip set into (2) 4" x 15 1/2" (10.16cm x 39.97cm) strips.



Harlequin

Fig. 8



Harlequin



Quilt Top Assembly

9. Referring to the **Quilt Layout** on page 8, arrange the sashed blocks in the rows shown, paying careful attention to the placement of the prints in the triangles.
10. Sew the units together in each horizontal row and press the seam allowances in alternate directions from row to row.

Prepare and Add the Borders

11. Sew (2) **Fabric H** 1" x WOF (2.54cm x WOF) inner border strips together, short end to short end, to make 1 long strip. Press the seam open. Repeat to make a total of 4 long inner border strips.
12. Trim 2 of the inner border strips to 1" x 46½" (2.54cm x 118.11cm) for the top and bottom inner borders. Trim the remaining 2 strips to 1" x 61½" (2.54cm x 156.21cm) for the side inner borders.
13. Sew the 1" x 61½" (2.54cm x 156.21cm) inner border strips to the long edges of the quilt top and press the seam allowances toward the border strips. Add the top and bottom borders and press the seam allowances toward the border strips.
14. Matching the flower pattern in 2 of the **Fabric A** 5½" x WOF (13.97cm x WOF) strips, sew them together, end to end, to make one long strip. Repeat with the remaining strips to make a total of 4 long outer border strips. Press the seam allowances open.
15. Trim 2 of the outer border strips to 5½" x 46½" (13.97cm x 118.11cm) for the top and bottom borders. Trim the remaining 2 strips to 5½" x 61½" (13.97cm x 156.21cm) for the side outer borders.
16. Sew the 5½" x 61½" (13.97cm x 156.21cm) **Fabric A** outer border strips to the long edges of the quilt top and press the seam allowances toward the border strips.

17. Sew a **Fabric F** 5½" x 5½" (13.97cm x 13.97cm) square to opposite ends of the (2) 5½" x 46½" (13.97cm x 118.11cm) outer border strips and press the seam allowances toward the borders. Sew the strips to the top and bottom edges of the quilt top and press the seam allowances toward the borders.

Finishing

18. Prepare a 65" x 80" backing panel. Trim away any stray threads on the back of the quilt top. Press the backing and the quilt top to remove all wrinkles.
19. Layer the backing, batting, and quilt top and baste the layers together using your favorite basting method. Quilt or tie as desired. Trim the backing and batting even with the quilt top edges.
20. Sew the (7) 2½" x WOF (6.35cm x WOF) **Fabric D** strips together with diagonal seams to make one long strip. Press the seam allowances open. Fold the strip in half lengthwise with wrong sides together and press.
21. With raw edges even, sew the binding strip to the top of the quilt and miter the corners as you reach them. Turn the binding to the back of the quilt and blind-stitch in place.



Harlequin



Quilt Layout

